

**CANALISATION DN 250mm - PROJET DE CONTOURNEMENT**

**RACCORDEMENT AU DN 200mm EXISTANT**

**TRAVERSEE RD 22 MENANT A POGHJALE**

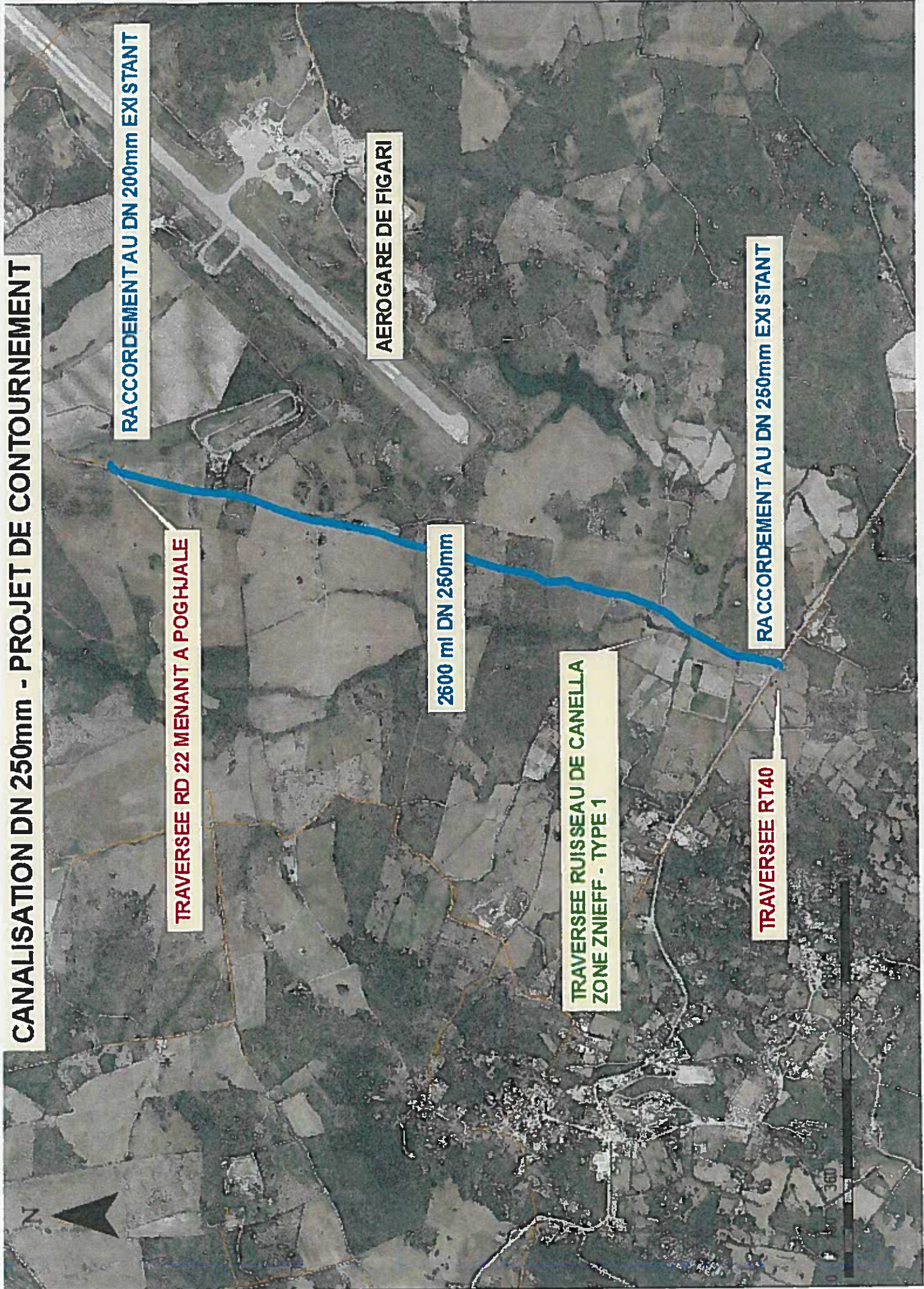
**AEROGARE DE FIGARI**

**2600 ml DN 250mm**

**TRAVERSEE RUISSEAU DE CANELLA  
ZONE ZNIEFF - TYPE 1**

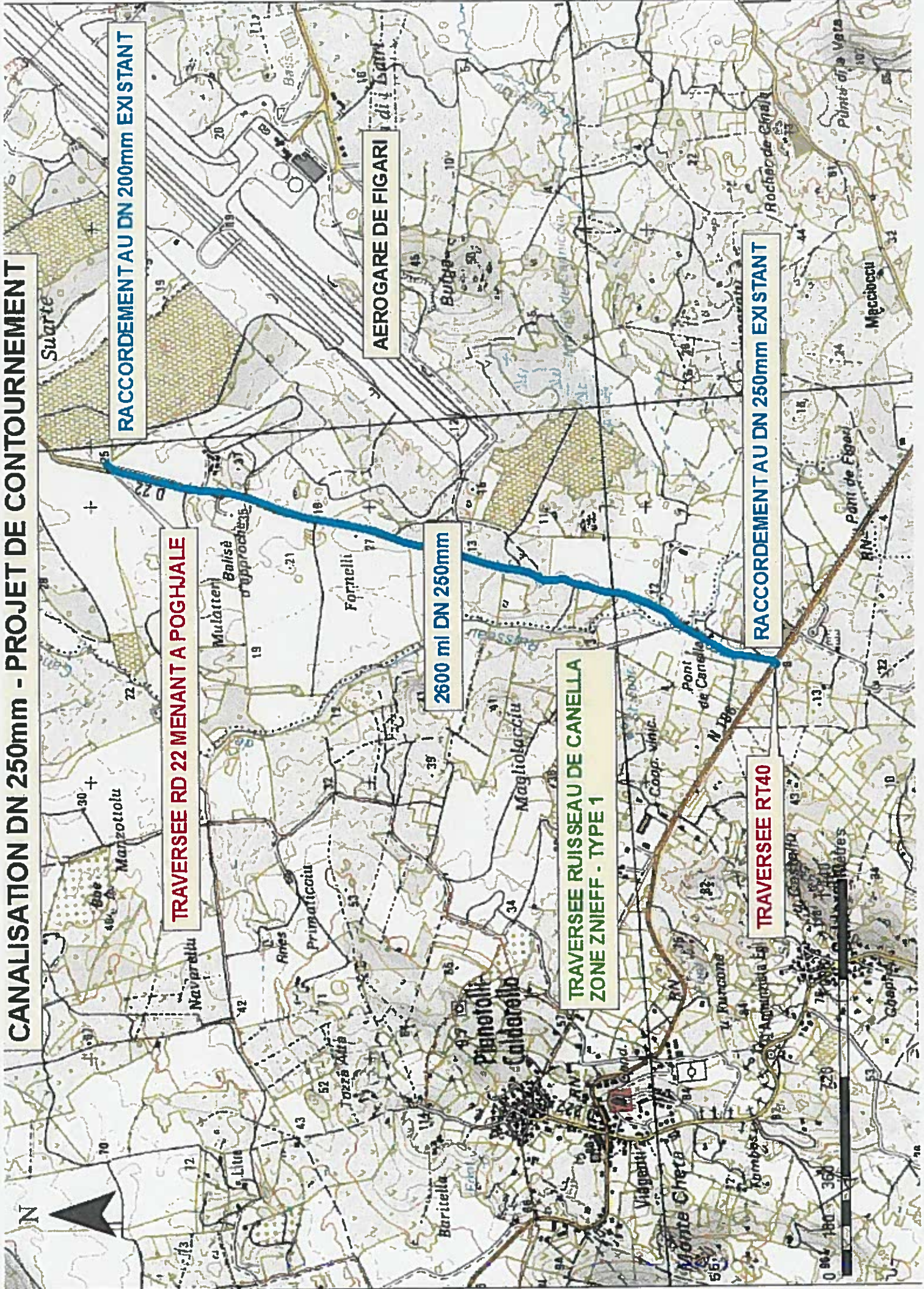
**TRAVERSEE RT40**

**RACCORDEMENT AU DN 250mm EXISTANT**





# CANALISATION DN 250mm - PROJET DE CONTOURNEMENT



RACCORDEMENT AU DN 200mm EXISTANT

TRAVERSEE RD 22 MENANT A POGHJALE

AEROGARE DE FIGARI di Lanai

2600 ml DN 250mm

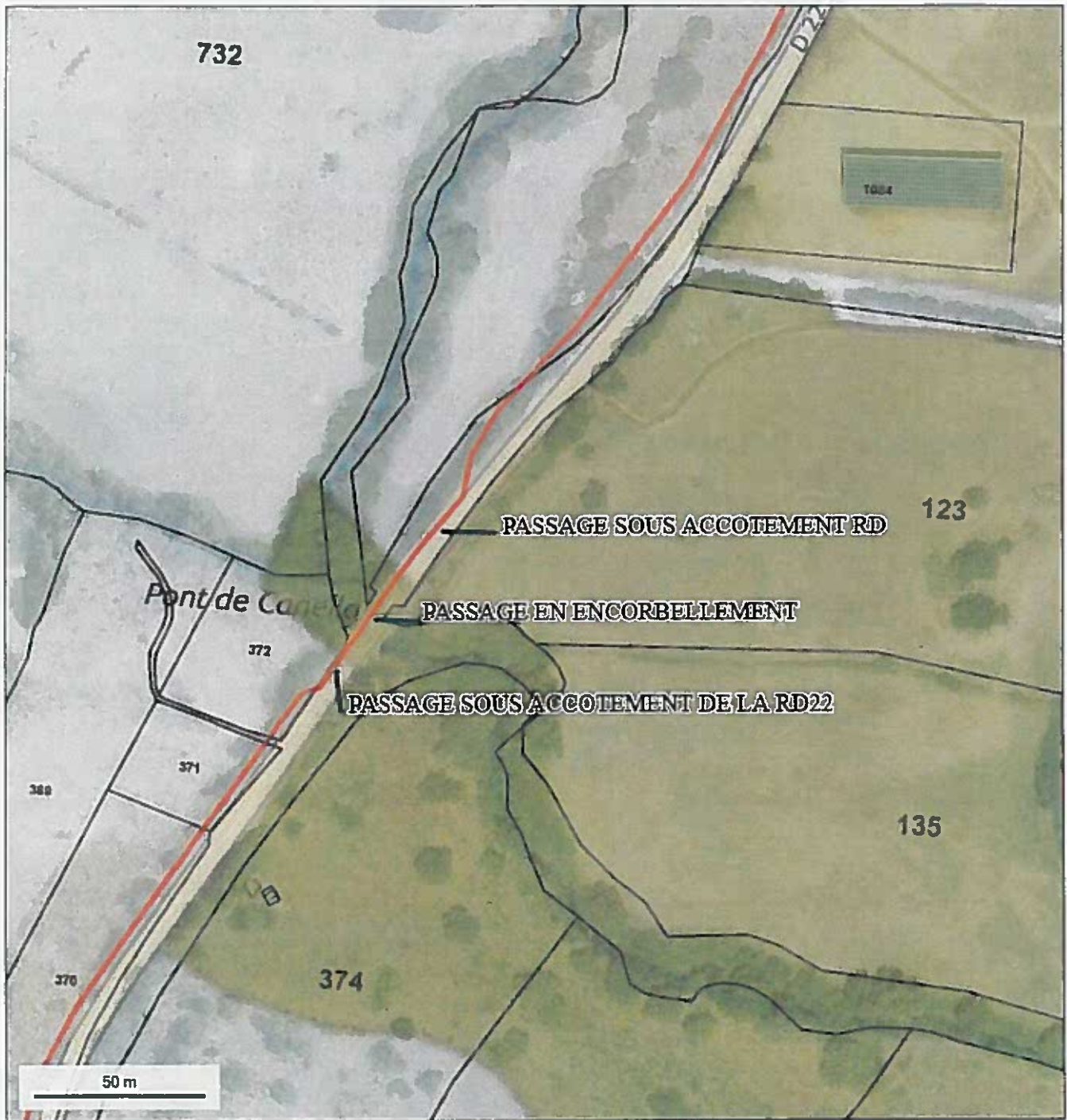
TRAVERSEE RUISSEAU DE CANELLA  
ZONE ZNIEFF - TYPE 1

TRAVERSEE RT40

RACCORDEMENT AU DN 250mm EXISTANT

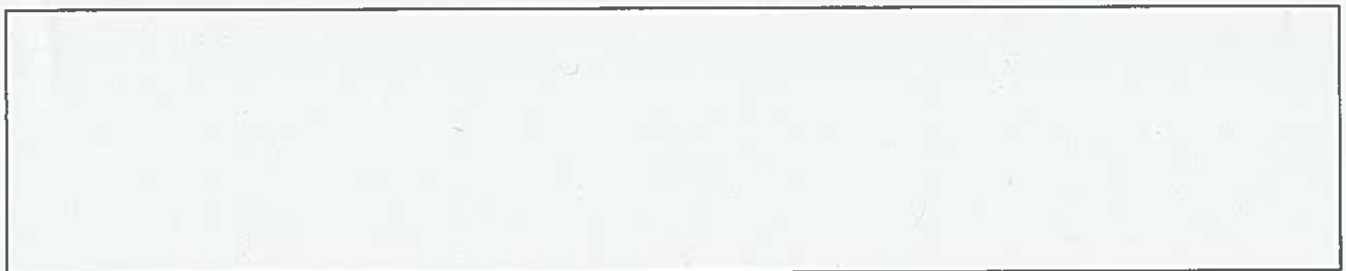




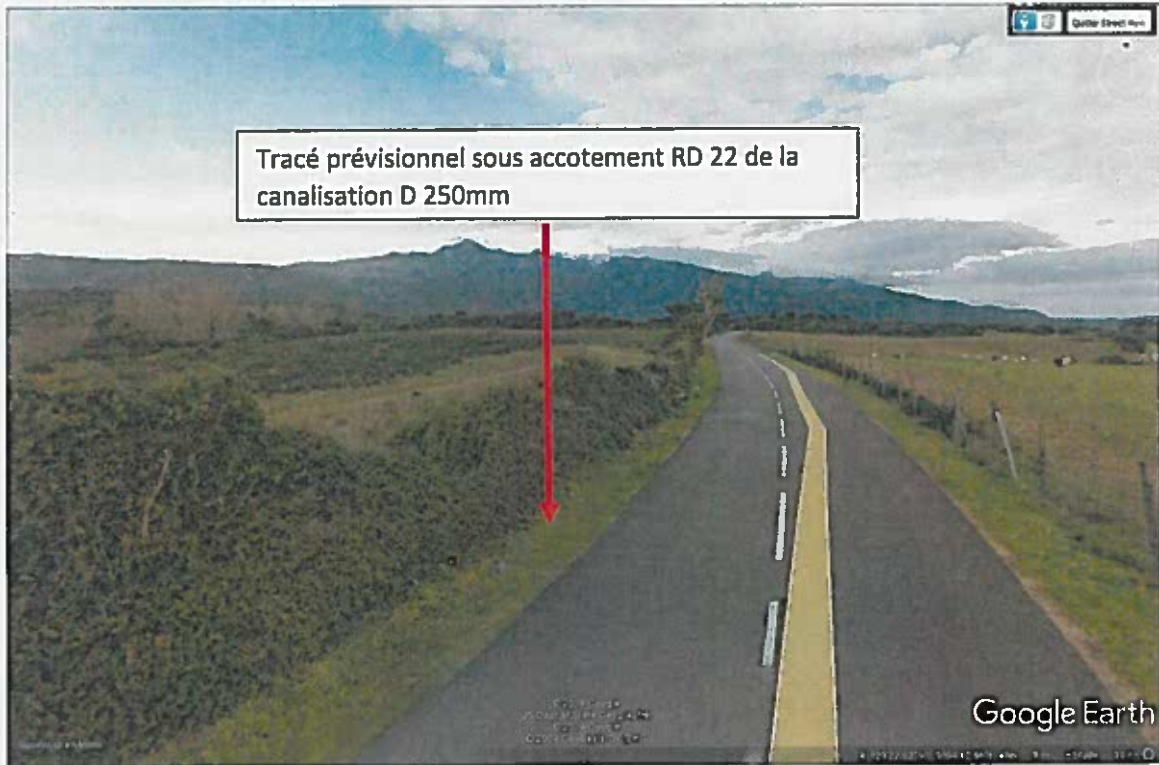


© IGN 2019 - [www.geoportail.gouv.fr/mentions-legales](http://www.geoportail.gouv.fr/mentions-legales)

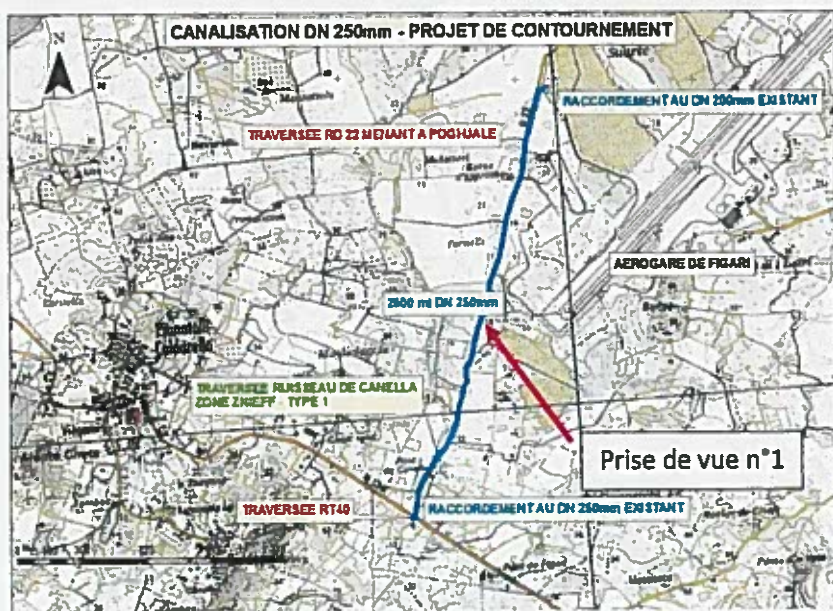
Longitude : 9° 04' 39" E  
Latitude : 41° 29' 17" N



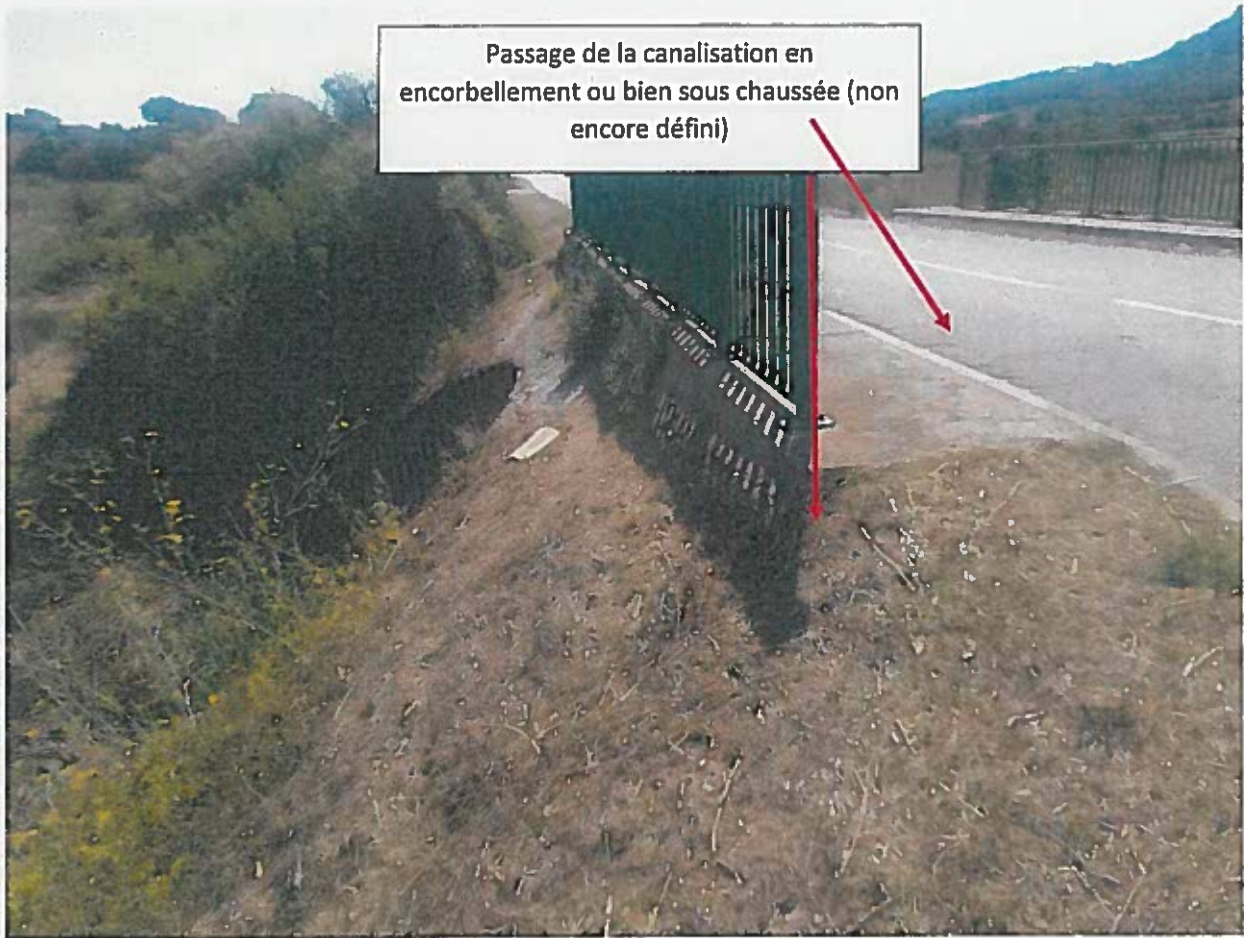
# REPORTAGE PHOTOGRAPHIQUE



Photographie n°1 (extrait Google earth)







Photographie n°2 : passage du pont de Canella (septembre 2019)

