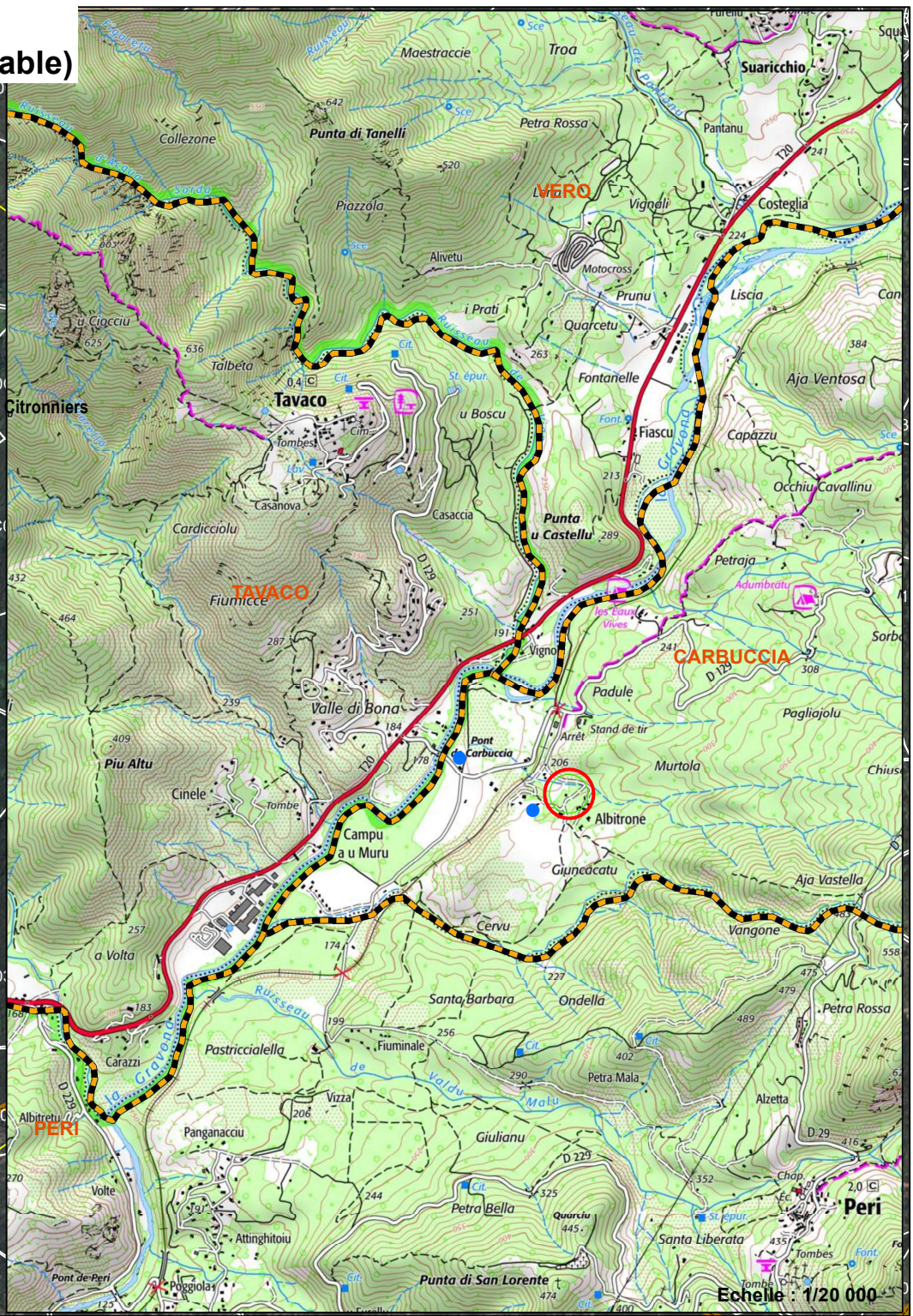
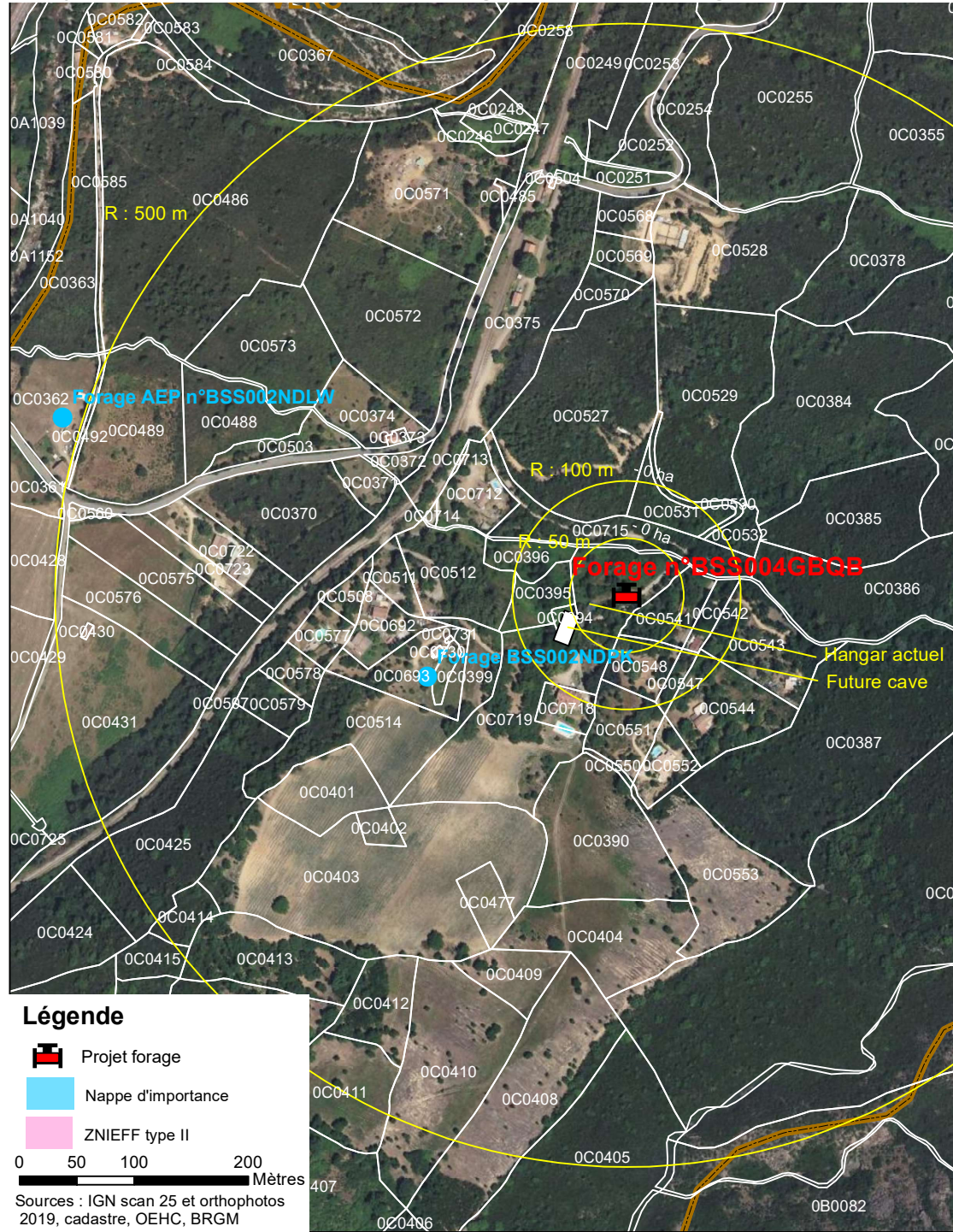





SCEA TARRA DI L'APA / SALASCA Romain (CARBUCCIA)

Projet d'implantation d'un forage à vocation agricole (eau potable)



Légende

-  Projet forage
-  Nappe d'importance
-  ZNIEFF type II

0 50 100 200
Mètres

Sources : IGN scan 25 et orthophotos 2019, cadastre, OEHC, BRGM

Echelle : 1/20 000