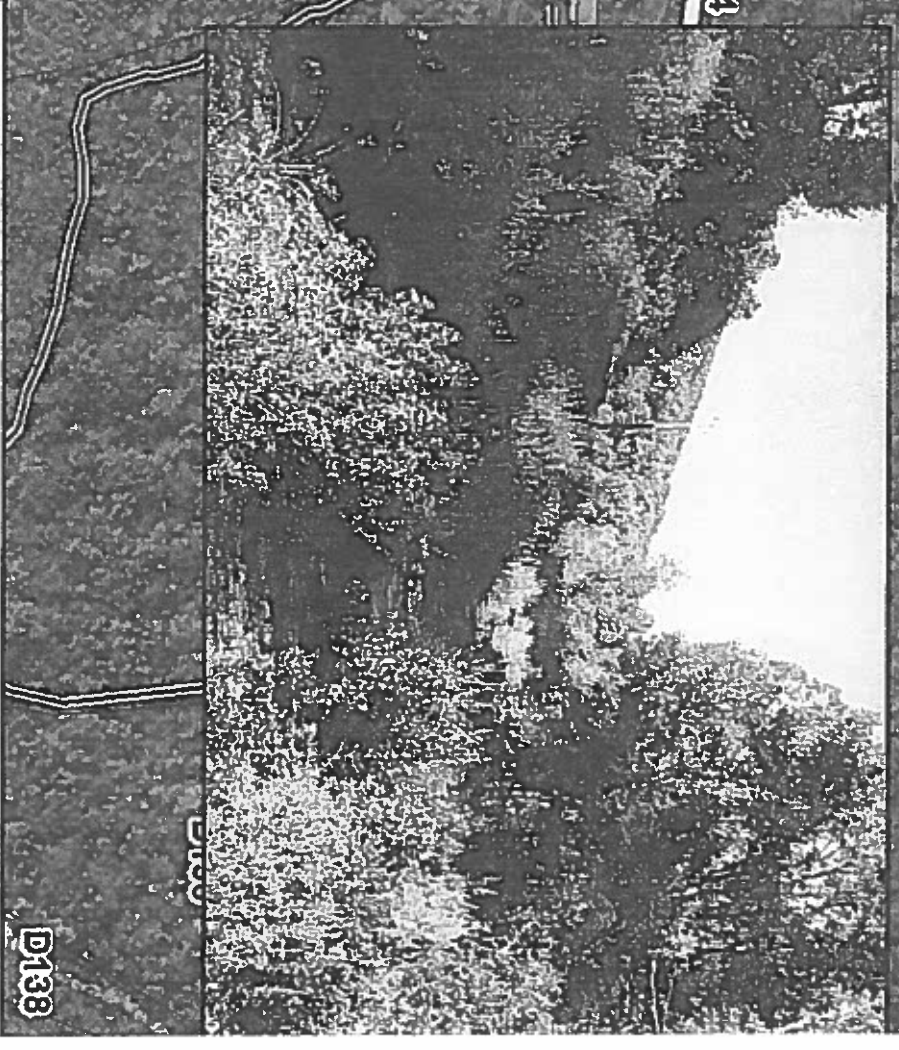
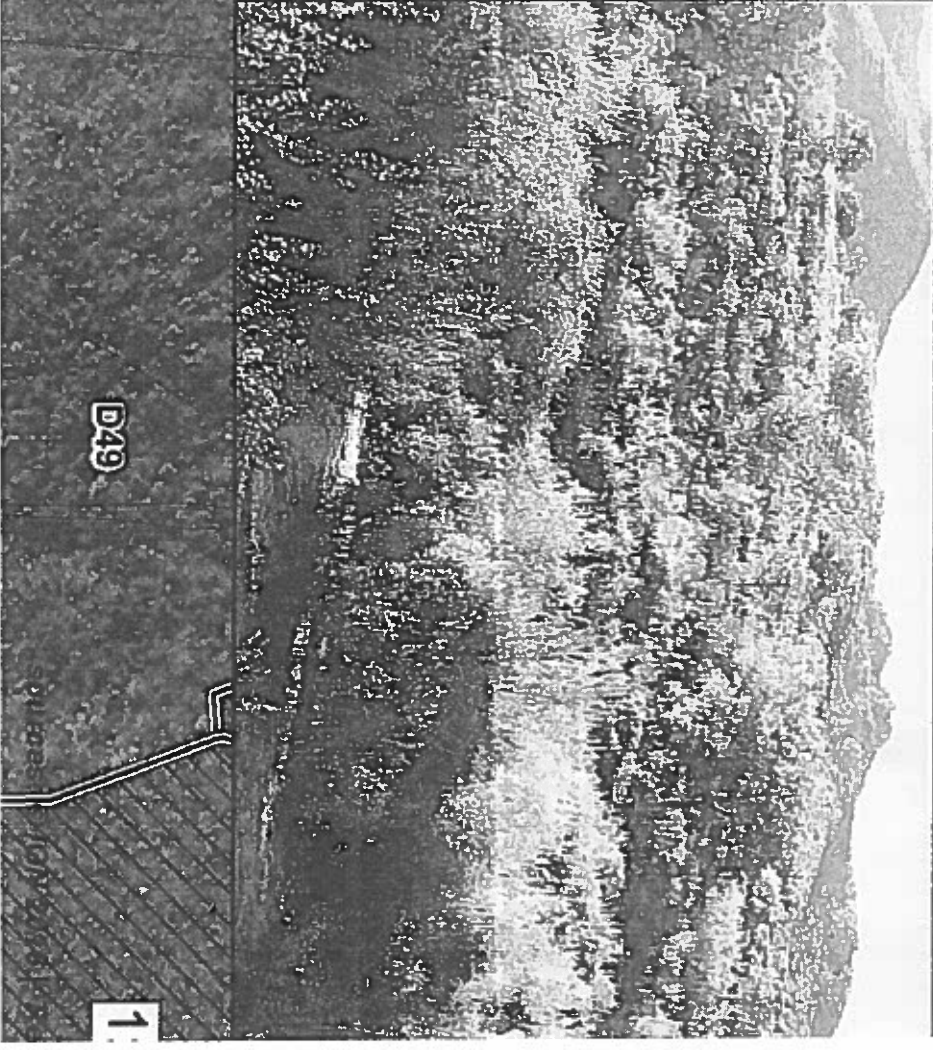


e  
tos  
et MVA  
cellaire  
**cloture**  
ure béliier  
ure porcine





e  
stos  
jet de cloture  
jet de MVA  
cellaire







479

537 (ex 456)

535 (ex 314)

536 (ex 314)

(ex 456)

313

312

413

e

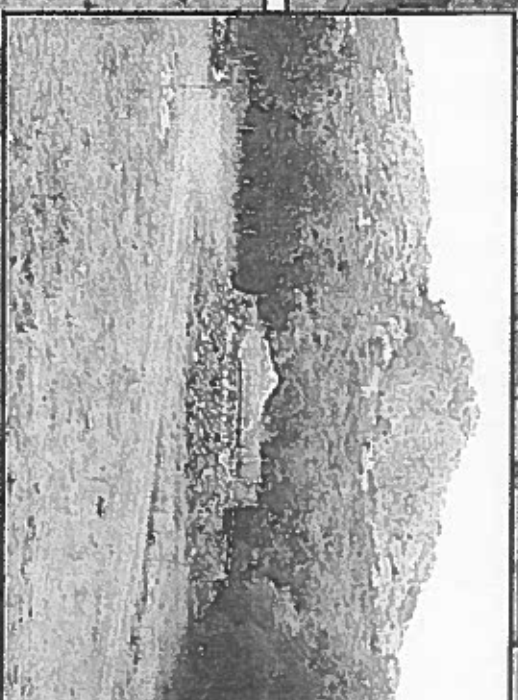
tos

cellaire

cloiture

ure existante

ure porcine + layon mécanique





e  
tos  
et de cloture  
et MVA  
cellaire  
et piste  
imin existant

