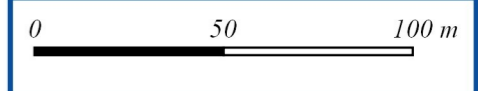
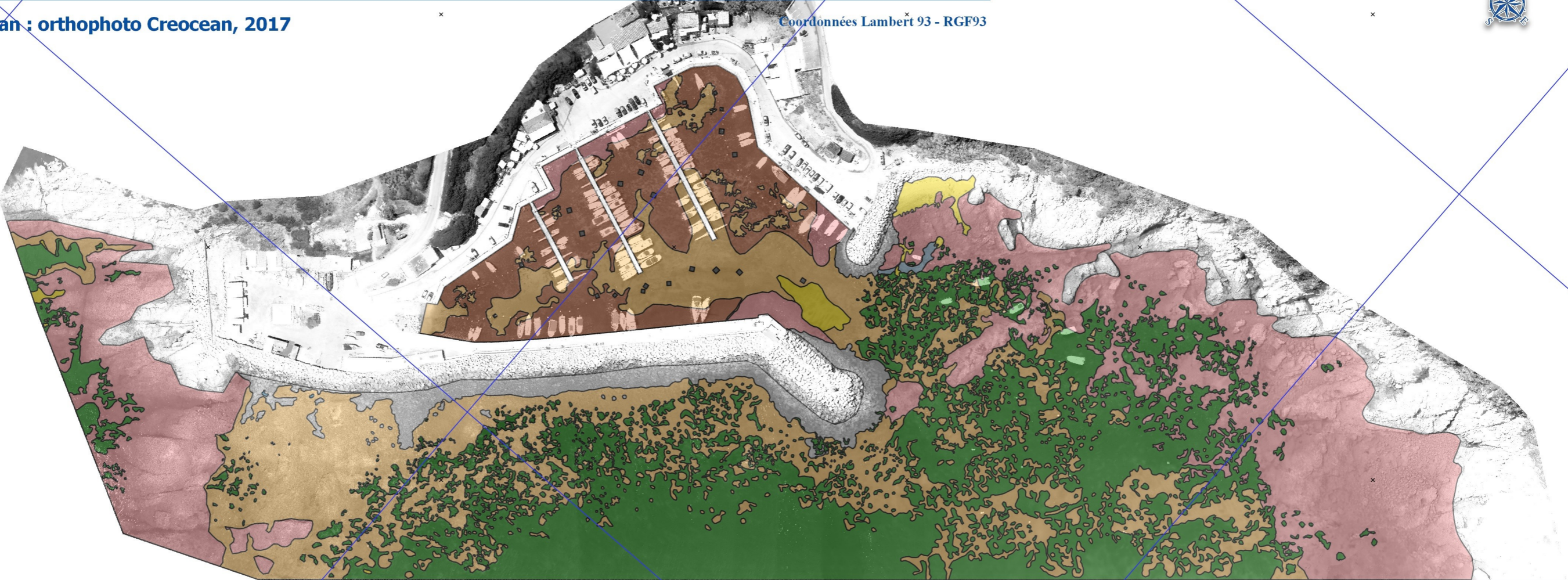


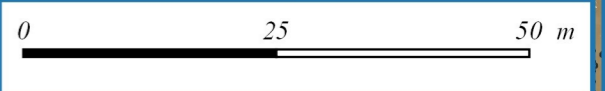
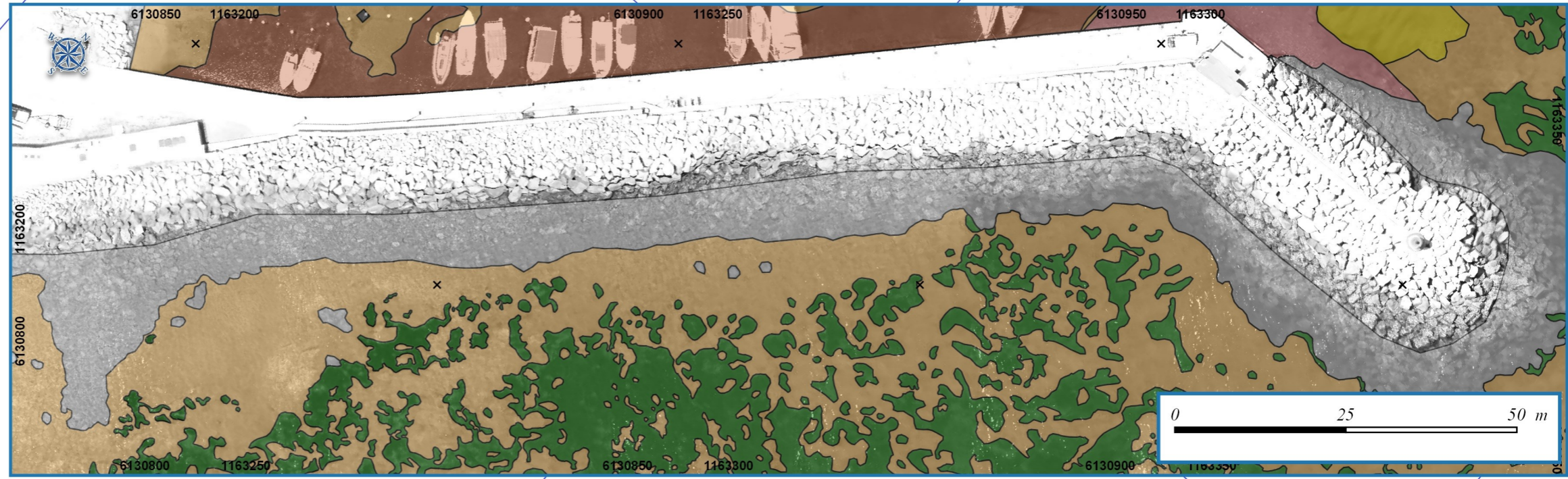
CARTOGRAPHIE DE NATURE DES FONDS - ZOOM DIGUE - PORT DE CARGESE

Fond de plan : orthophoto Creocan, 2017

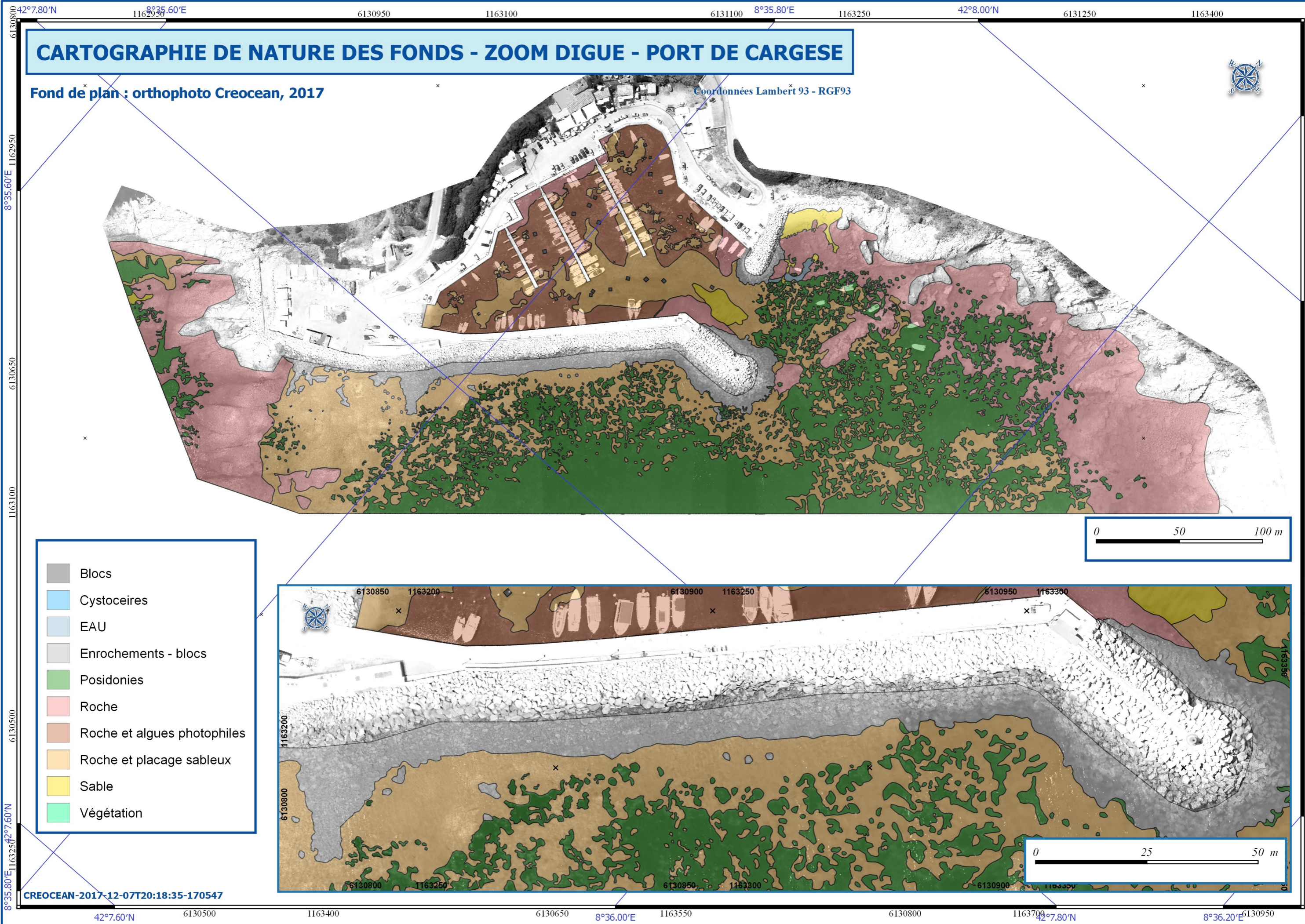
Coordonnées Lambert 93 - RGF93



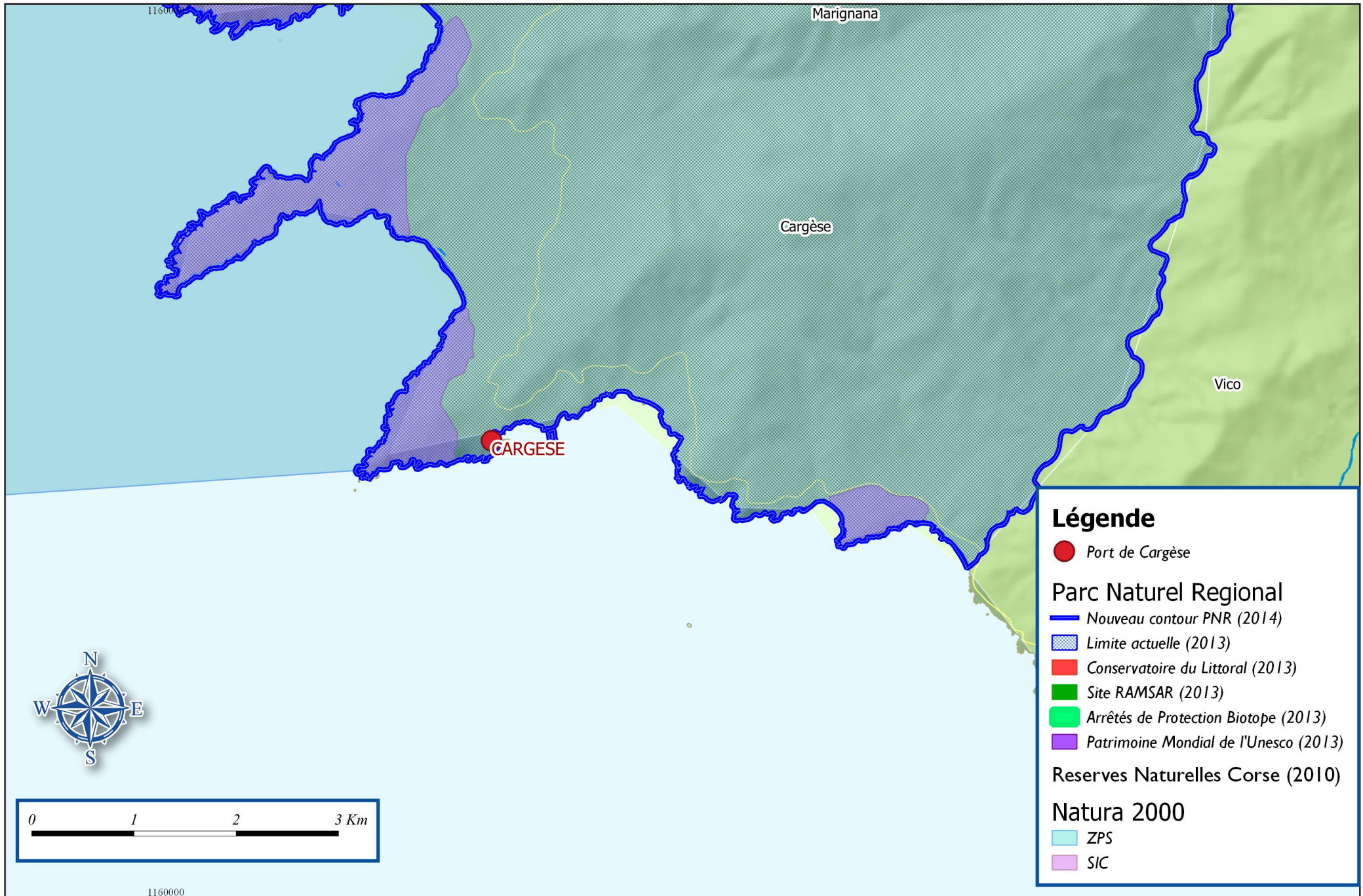
- Blocs
- Cystocieres
- EAU
- Enrochements - blocs
- Posidonies
- Roche
- Roche et algues photophiles
- Roche et placage sableux
- Sable
- Végétation

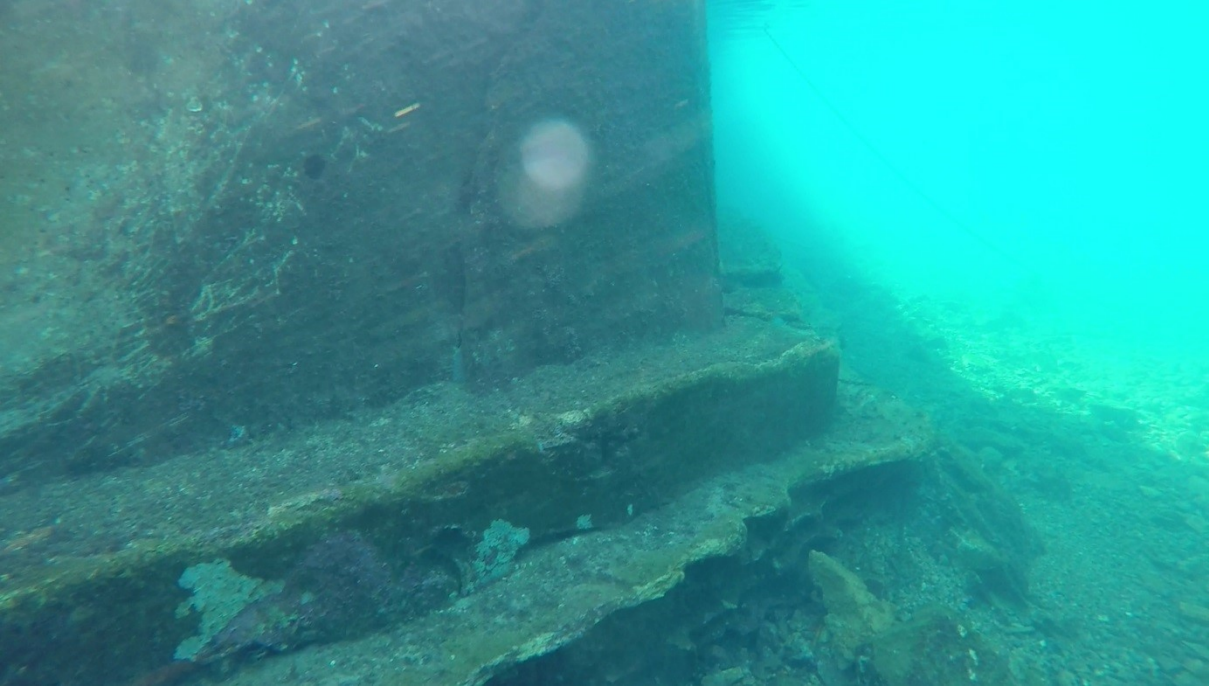


CREOCAN-2017-12-07T20:18:35-170547



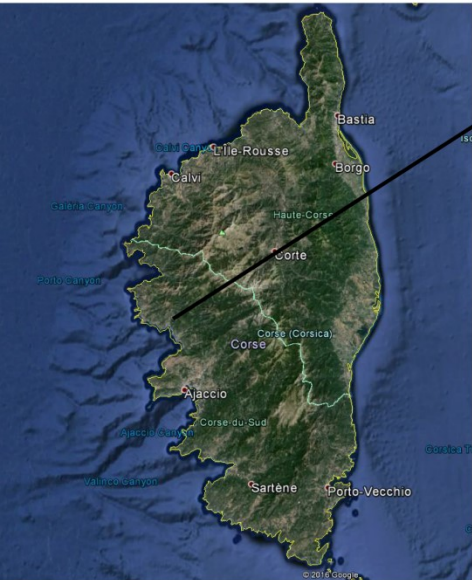
LOCALISATION DES SITES D'INTERET ECOLOGIQUE











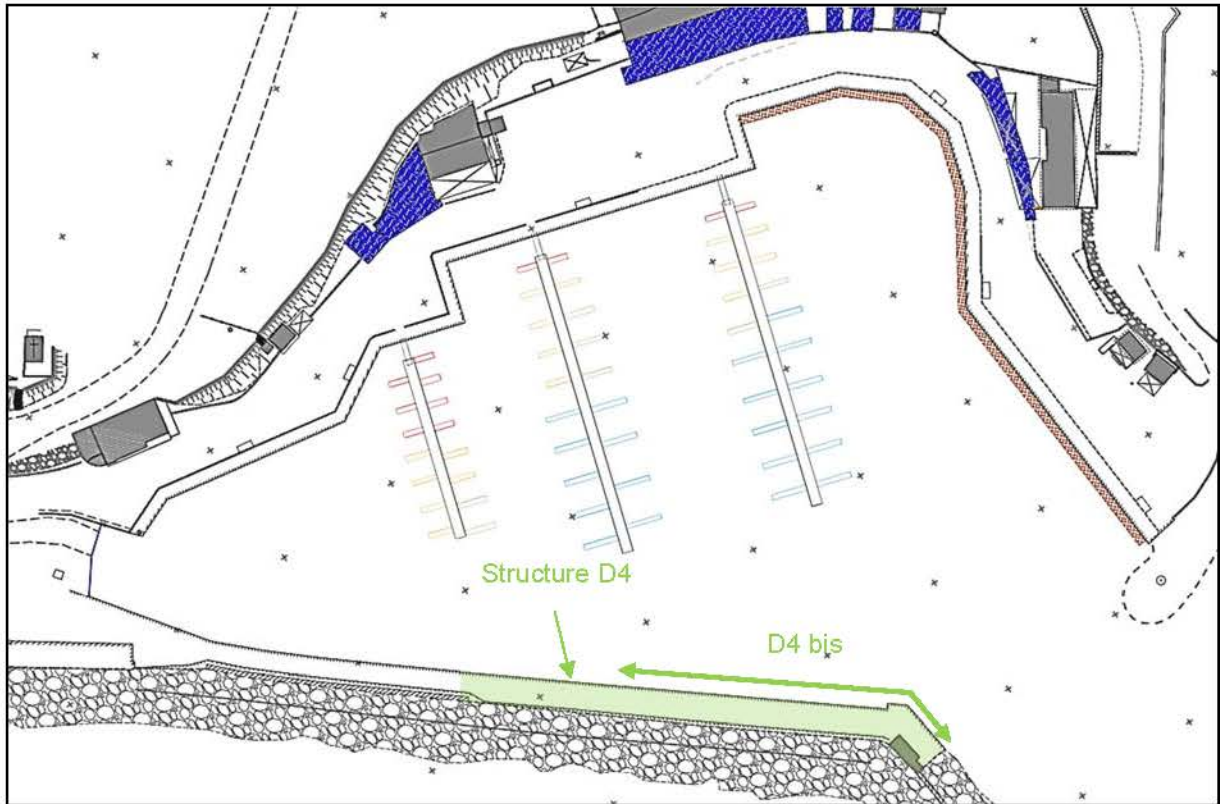


Figure 28 : Plan de repérage des structures D4 et D4 bis