

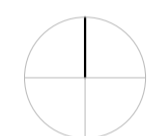
CORSE du SUD - Commune de SAN GAVINO DI CARBINI
Section B , parcelle 791
PROPRIETE de SAS ALINIA

PA3 EXISTANT

Lotissement " ALINIA 2 " PLAN DE MASSE EXISTANT

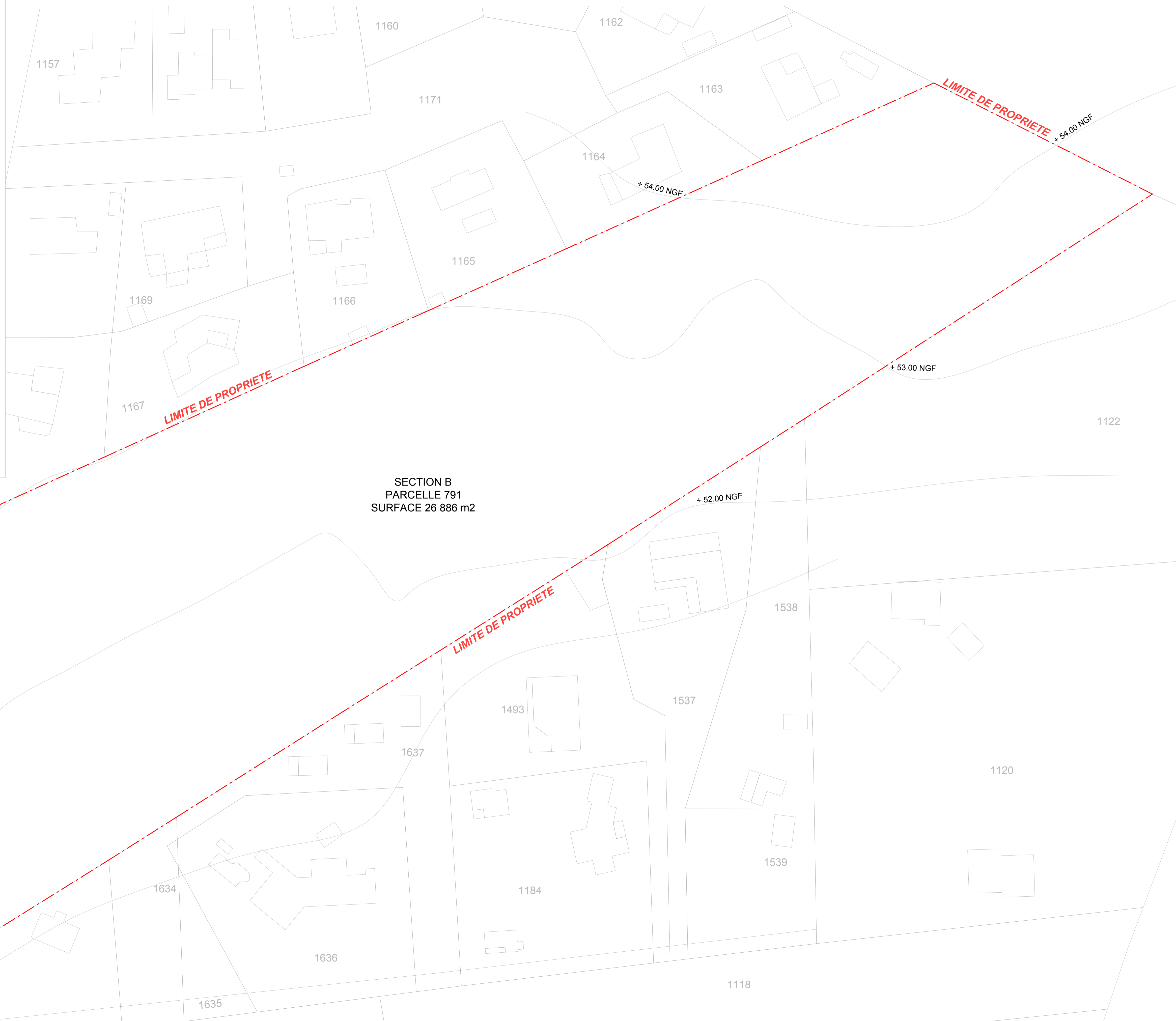
LEGENDE :

VEGETATION EXISTANTE 



Echelle 1/500

Nivellement local non rattaché au N.G.F.



SECTION B
PARCELLE 791
SURFACE 26 886 m2

BORNE
INCENDIE EXISTANTE

+ 51.00 NGF

+ 52.00 NGF

+ 53.00 NGF

1634

1636

1635

1637

1493

1184

1537

1539

1538

1118

1120

1122

+ 52.00 NGF

+ 53.00 NGF

+ 54.00 NGF

+ 54.00 NGF

LIMITE DE PROPRIETE

LIMITE DE PROPRIETE

LIMITE DE PROPRIETE